



EMMIE UPDATE

NORMA PADILLA
Team Leader-EMMIE

26 September 2014



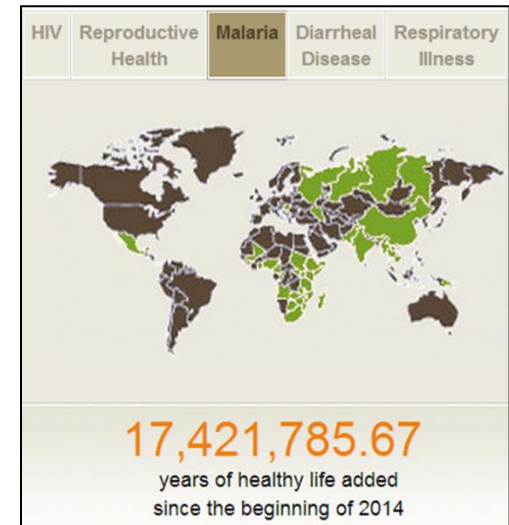
PSI/PASMO

- **PSI is the Principal Recipient**

- The world's largest social marketing organization
- PSI works in 32 endemic countries, including 24 in sub-Saharan Africa
- PSI has delivered more than 150 million LLINs and more than 35 million malaria treatments

- **PASMO-Panamerican Association for Social Marketing**

- Member of PSI network
- Regional Office based in Guatemala
- 9 offices in the region (one per country)





PRINCIPAL RECIPIENT WORK PLAN

1

Program Management

- Contract with GF
- Manage the SAs
- Overview the implementation of the SAs
- Periodic Reports

2

Monitoring & Evaluation

- Assist the MCR in establishing TAG
- Independent Verification
- Coordinate with PAHO for case submission

3

Specific Prevention Interventions

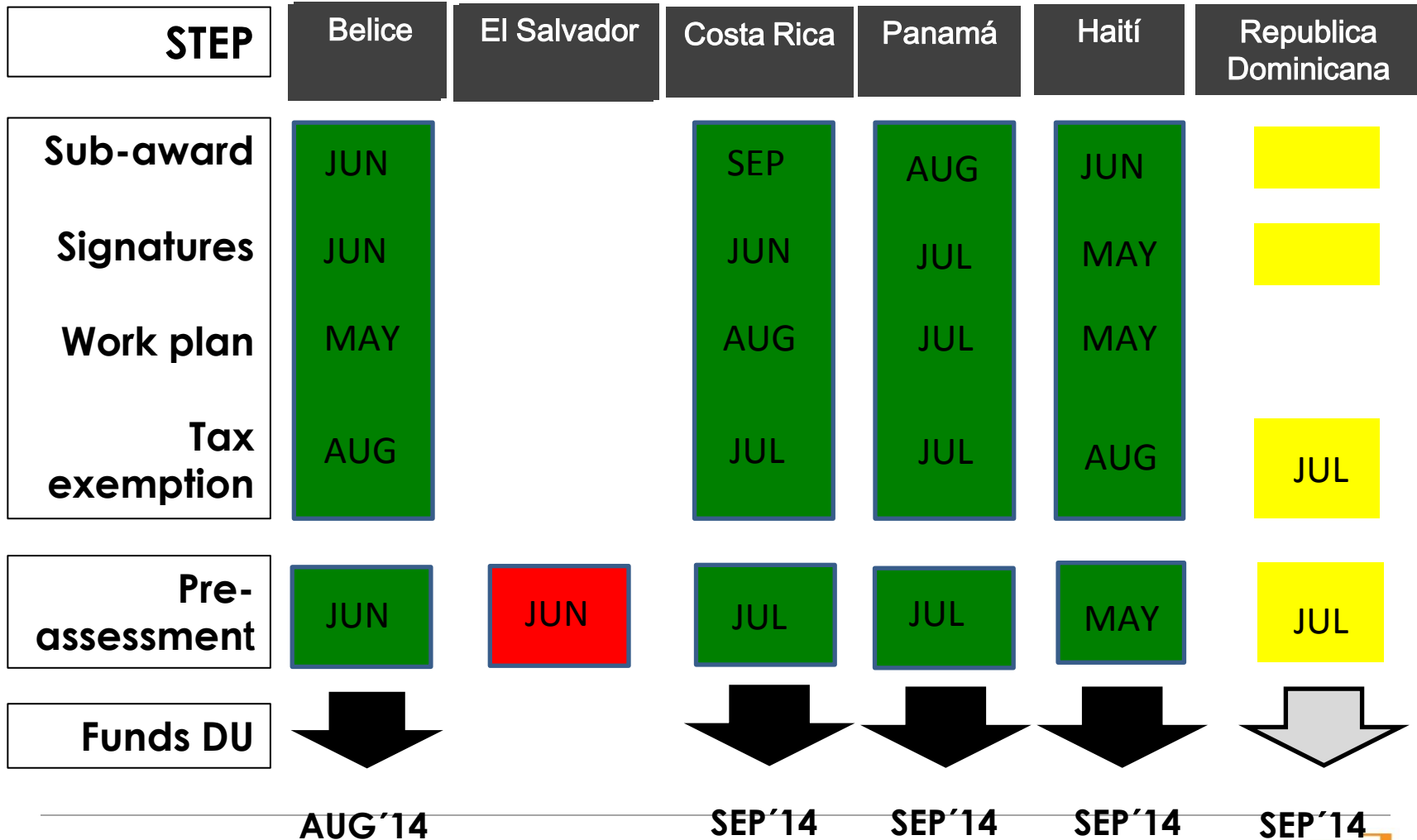
- Malaria Elimination
- Strategic Plan for Mesoamerica
- External verification process
- Civil Society: to structure and promote their participation.

4

Case Management

- Procurement of supplies and equipment for strengthening diagnosis

Sub-awards Progress To-Date





Six Pillars of the Regional Strategy

1. Improve malaria prevention, surveillance, early detection and malaria outbreak control
2. Integrated Vector Management
3. Treatment and diagnosis
4. Case management
5. Promotion, communication, alliances and collaborations
6. Strengthen health systems



Other elements of the EMMIE initiative include:

- Supporting the standardization of case management best practice for malaria, to ensure proper diagnosis and timely treatment
- Supporting the standardization of an agreed protocol for integrated vector management
- Facilitating cross-border cooperation and regional coordination
- Establishing a regional operational research framework for guiding and facilitating the implementation of elimination strategies



Countries Work Plans



Reorientation from Control to Elimination

- Development of national malaria elimination plans
- Training institutional health personnel (technicians, microscopists, volunteer collaborators, etc. in the new plan
- Development of support material for the implementation of the plan.

(BLZ, CR, ELS, PNM)



Improve Prevention, Surveillance and Early Detection

- Active case detection and research on asymptomatic and SMI infections (CR, ELS, RD)
- Develop/strengthen the malaria module within the already existent information system (BLZ, CR, ELS, PNM)
- Outbreak Control (BLZ, ELS)
- Risk mapping (BLZ)
- Incorporate the susceptibility of insecticides to the surveillance system (PNM)
- Scale up the network of community health workers (HAI)



Integrated Vector Management

- Indoor Residual Spraying (ELS)
- LLINs (ELS)
- Monitor vector control interventions (BLZ)
- To trained Public Health Entomologist (CR)



Diagnosis, Treatment and Case Management

- Hire/train microscopist to performed quality control of diagnosis (BLZ, CR, RD)
- Change staining technique form Romanowsky to Giemsa (CR, RD)
- Supervision of case investigations (BLZ)
- Implement the new treatment (BLZ)
- Scale-up the network of community health workers (HAI)



Promotion, Communication, Alliances, and Collaborations

- Develop educational material (BLZ, HAI, PNM)
- Develop/Strengthen communication plan (BLZ, HAI)
- Workshops with health promoters (BLZ, HAI)
- Strengthen cross-border interventions (CR, BLZ)
- Develop cultural suitable interventions (PNM)



Questions?



WHO Indicators for Elimination		BLZ	CR	DR	ELS	GTM	HTI	HND	NIC	PAN
Malaria Situation	Confirmed cases	7	3	NA	5	3,292	8,606	1,597	497	318*
	Confirmed cases per 1,000 people per year in most affected municipality	0.12	0.02	NA	0.095	7.15	3.51	45*	2.78	6.9*
Treatment & Diagnosis	% of cases treated with radical treatment	100	100	NA	100	80.65	100*	NA	100	100
	% of cases that undergo quality control with microscopy	100	100	NA	100	99.94	5*	100	100+, 10-	100
Surveillance, Monitoring & Evaluation	% of municipalities implementing active case detection	100	NA	NA	3	0.99	0.007	4	11.7	35
	% of foci investigated and classified	100	100	NA	100	100	0.002	13	100	100
	Documentation for elimination	Yes	No	NA	No	Yes	Yes	Yes	Yes	Yes
Program Goal	Interrupt transmission of malaria in the country	Yes	Yes	NA	Yes	Yes	Yes	Yes	Yes	Yes
Vector Control & Prevention	% of foci that are implementing vector control	100	100	NA	100	100	NA	58	NA	100
Health Systems & Financing	National budget for the elimination of malaria	Yes	Yes	NA	No	No	No	Yes	Yes	Yes

*Data from 2013

**% of *P. Falciparum* cases